

SHIMANO®

SHIMANO EUROPA

Industrieweg 24 NL-8071 CT Nunspeetâ Holland
Phone 31-341-272222

SHIMANO AMERICAN CORPORATION

One Holland Irvine CA 92618 U. S. A.
Phone 949-951-5003

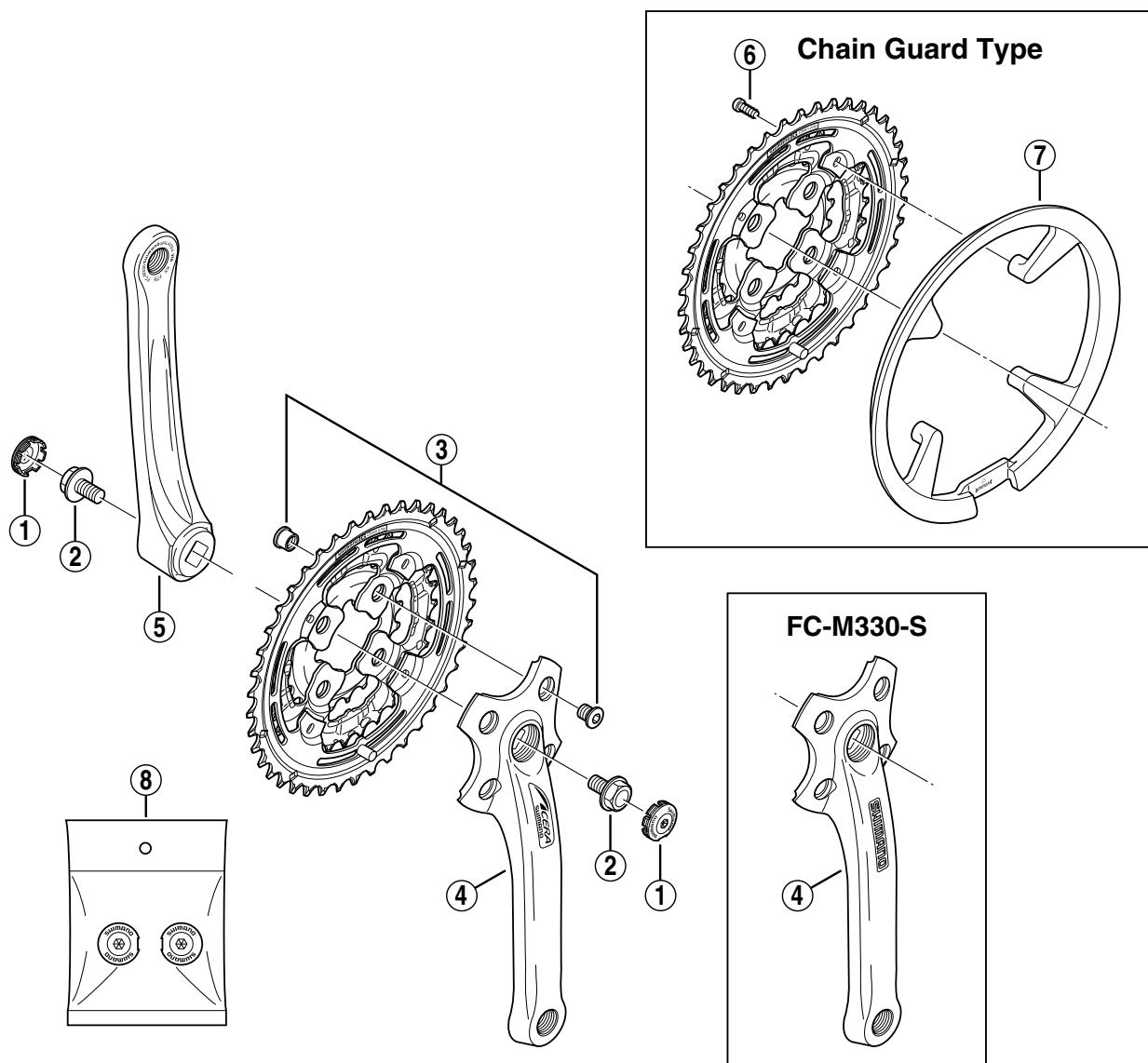
Spare parts list for after market.

- You may photocopy this sheet and use it as an order form.
- Sie können dieses Blatt kopieren und als Bestellformular verwenden.
- Vous pouvez photocopier cette feuille et l'utiliser comme bon de commande.
- Dit blad kan gecopieerd en als bestelformulier gebruikt worden.
- Potete fotocopiare questo foglio e usarlo come modulo di commissione.

SHIMANO ACERA Front Chainwheel

Dec. 1999

FC-M330 FC-M330-s



| ITEM NO. | SHIMANO CODE NO. | DESCRIPTION |
|----------|------------------|--|
| 1 | Y-1A1 11000 | Crank Arm Cap |
| 2 | Y-155 07000 | Crank Arm Fixing Bolt |
| 3 | Y-1CE 98020 | Gear Fixing Bolt (M8 x 8.5) & Nut (4 sets) |
| * | Y-1BN98020 | Right Hand Crank Arm 170 mm |
| | Y-1BN98040 | Right Hand Crank Arm 170 mm for FC-M330-S |
| | Y-1BN98030 | Right Hand Crank Arm 175 mm |
| * | Y-1BN98050 | Right Hand Crank Arm 175 mm for FC-M330-S |
| | Y-1BN02100 | Left Hand Crank Arm 170 mm |
| | Y-1BN03100 | Left Hand Crank Arm 175 mm |
| 6 | Y-1BN98010 | Chain Guard Fixing Bolt (4 pcs.) |
| 7 | Y-1BN11000 | Chain Guard (for 42T) |
| 8 | Y-1A1 98010 | Crank Arm Cap Set (10 pairs) |